



CLIVEPEARCE
Now you're moving

3 Bedrooms

Bungalow - Detached

Offers Over

£300,000

Located in

Redruth



www.clivepearceproperty.com



May Gardens

Redruth | | TR16 6AR



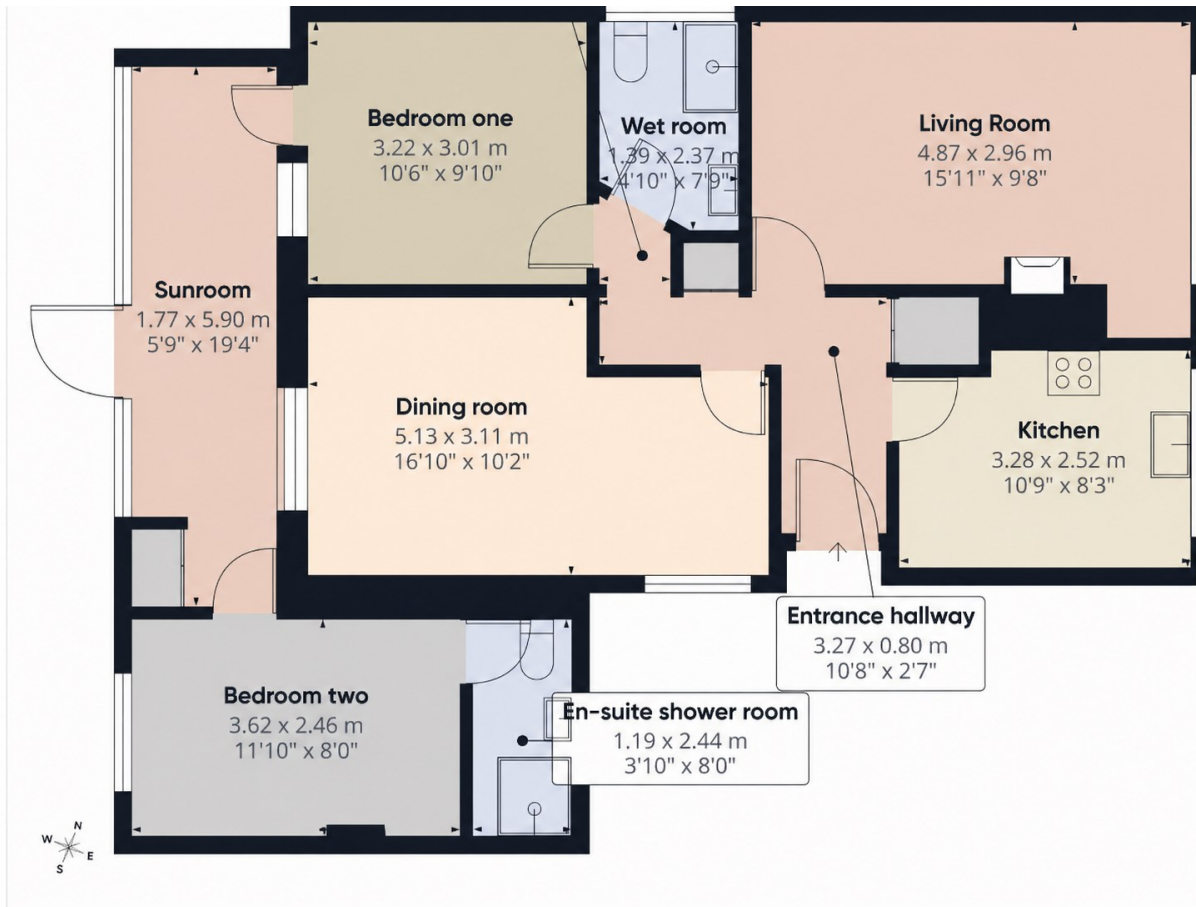
A beautifully presented two or three bedroom detached bungalow offering flexible accommodation occupying a slightly elevated position and enjoying an outlook towards Carn Marth.

May Gardens

£300,000 Freehold



- A versatile and well presented detached bungalow
- Located in an elevated position within a popular culdesac
- Enjoying pleasant views towards Carn Marth
- Two/three bedrooms, (Bedroom three currently utilised as a dining room)
- Wet room plus additional en-suite shower room
- Lounge, separate garden room and fitted kitchen
- Double glazed windows and LPG central heating
- Off-road parking for approximately three vehicles
- Enclosed well stocked garden, useful outbuildings



Council Tax Band C

Local Authority

Agents Note: Whilst every care has been taken to prepare these particulars, they are for guidance purposes only. All measurements are approximate and are for general guidance purposes only and whilst every care has been taken to ensure their accuracy, they should not be relied upon and potential buyers/tenants are advised to recheck the measurements.

Energy Efficiency Rating		
	Current	Potential
Very energy efficient - lower running costs		
(92 plus) A		
(81-91) B		
(69-80) C		
(55-68) D		58
(39-54) E	40	
(21-38) F		
(1-20) G		
Not energy efficient - higher running costs		
England & Wales	EU Directive 2002/91/EC	

31 Lemon Street

Truro

Cornwall

TR1 2LS



CLIVEPEARCE
Now you're moving

hello@clivepearceproperty.com

01872 272622

www.clivepearceproperty.com